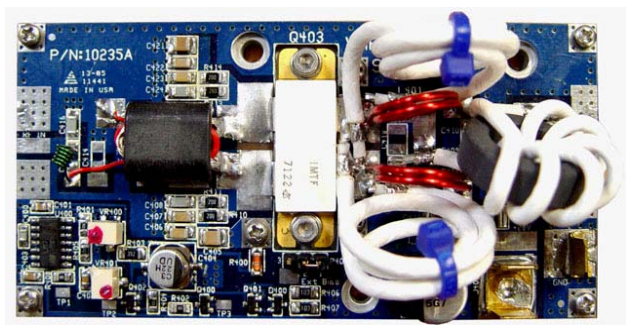


---

# NEW Solid State Broadband High Power Pallet 200W Amplifier FOR TV STATION

---

This is a 200W pallet amplifier for the 50 -110 MHz band. Superior performance is provided offering high gain, efficiency and power in a small pallet footprint using LDMOS transistors. Matched for 50 ohms input and output, this amplifier provides 19 dB typical Gain with NTSC Full-Field Red Power output in excess of 200 Watts at -54 dBc IMD operating at +32Vdc.



## Key Features:

- 200 Watts Pk-Sync @32Vdc
- 18 dB Gain
- No circuit tuning or RF assembly
- Amplifier disable input
- Combined Aural/Video Operation at full rated power

## Maximum Ratings:

Parameters	Value
Input Voltage	+34 Vdc
Bias Current	3.0 Amp
Drain Current / Load Mismatch	24 Amp
All Phase Angles	5:1
Baseplate Temp	+70° C
Storage Temp	-40° ~ +105° C

**Specifications: (Vsupply=+28Vdc, Idq=.8A, Freq=54-110MHZ)**

<b>Parameter</b>	<b>Min</b>	<b>Typ</b>	<b>Max</b>	<b>Unit</b>
Frequency	50		110	MHz
Pout P1dB		360		Watts
Gain	18	19		dB
Gain Variation		±1.0		dB
Power In		6	11	Watts
Drain current		20		Amps
Efficiency	30	42		%
Input VSWR		1.2:1	1.5:1	
2nd Harmonic		-30		dBc
3rd Harmonic		-12		dBc
Baseplate Operating Temp.	0		+70	° C
Size	16.51x10.16x3.81cm		6.5"x4"x1.5"	